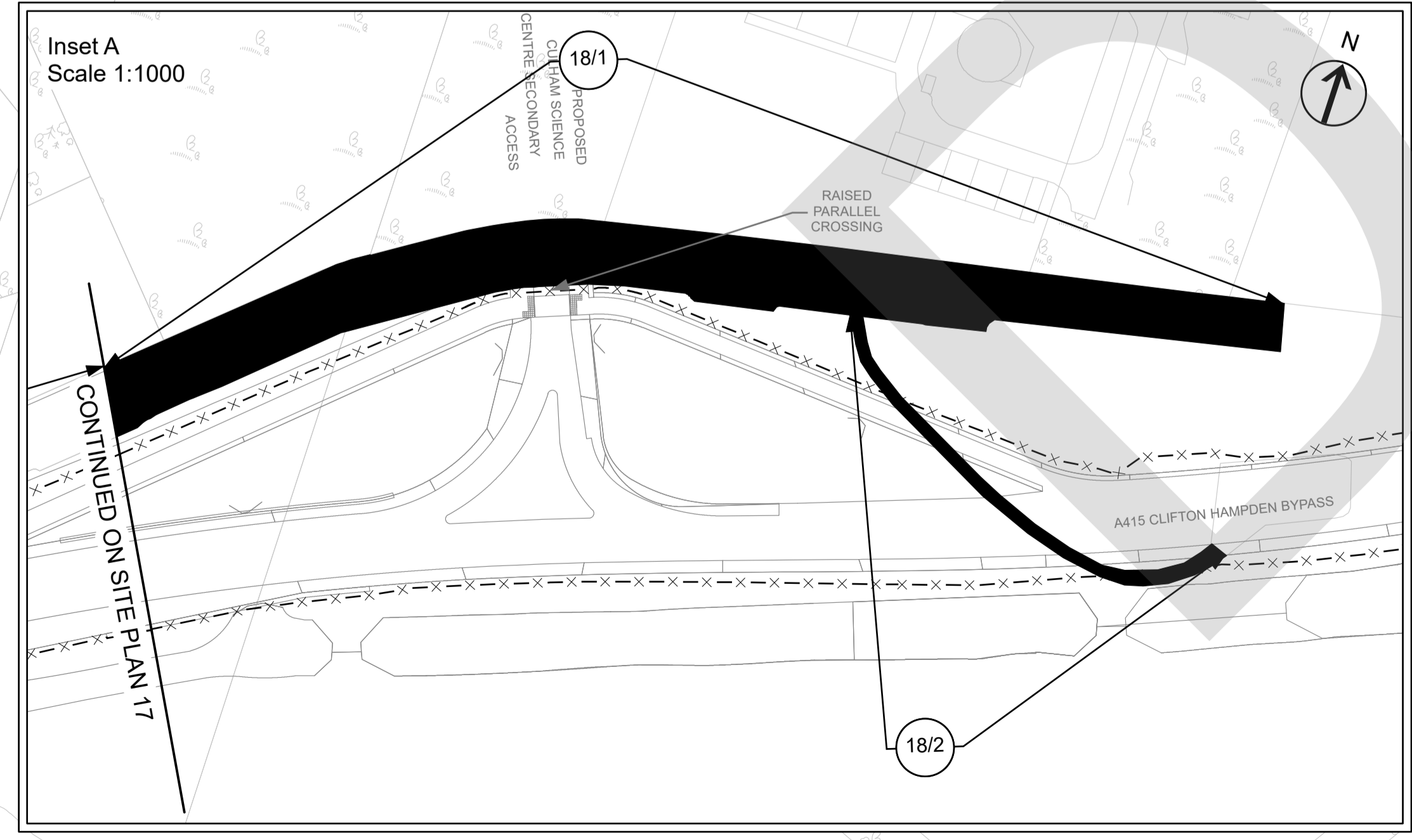
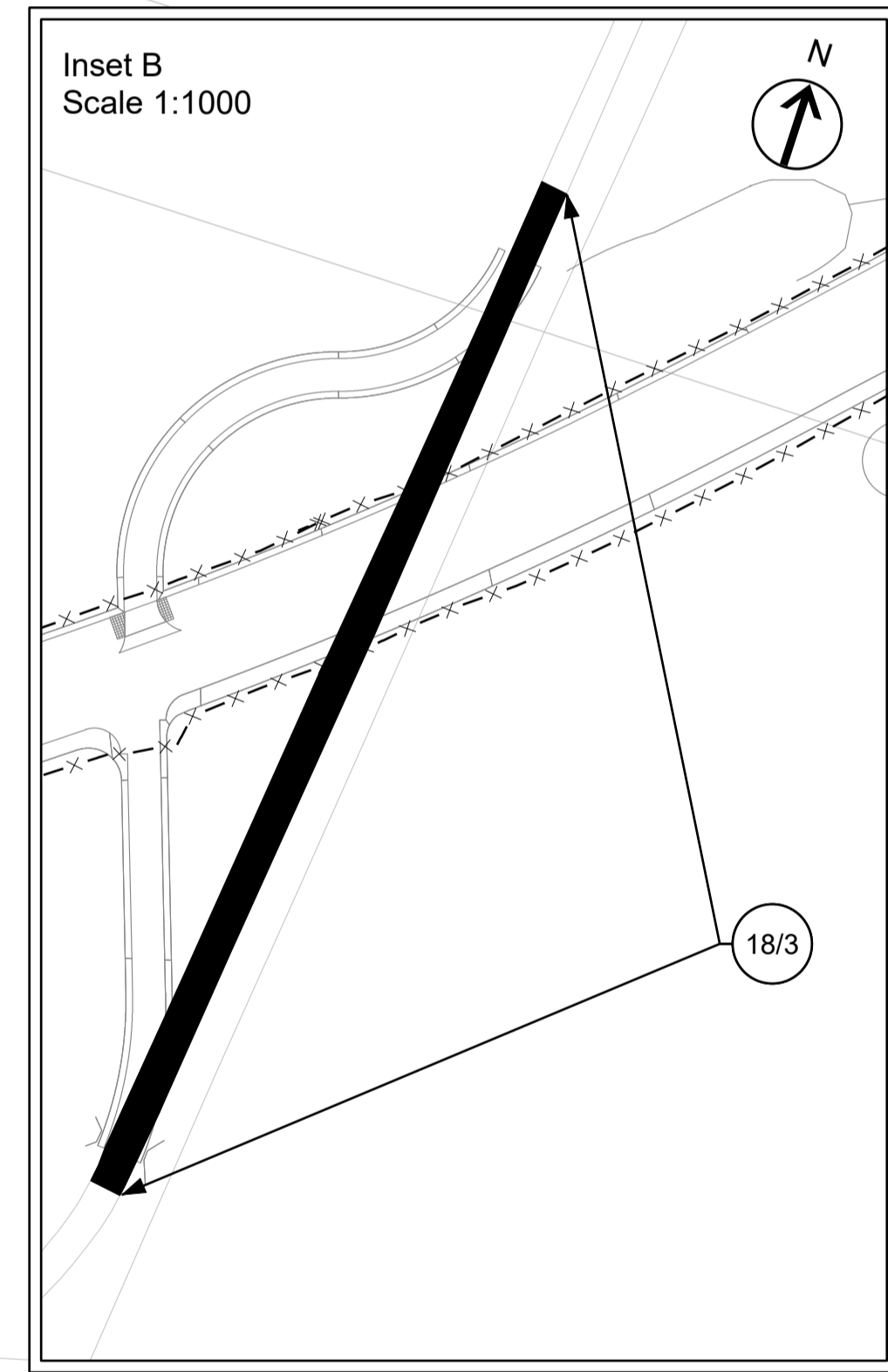
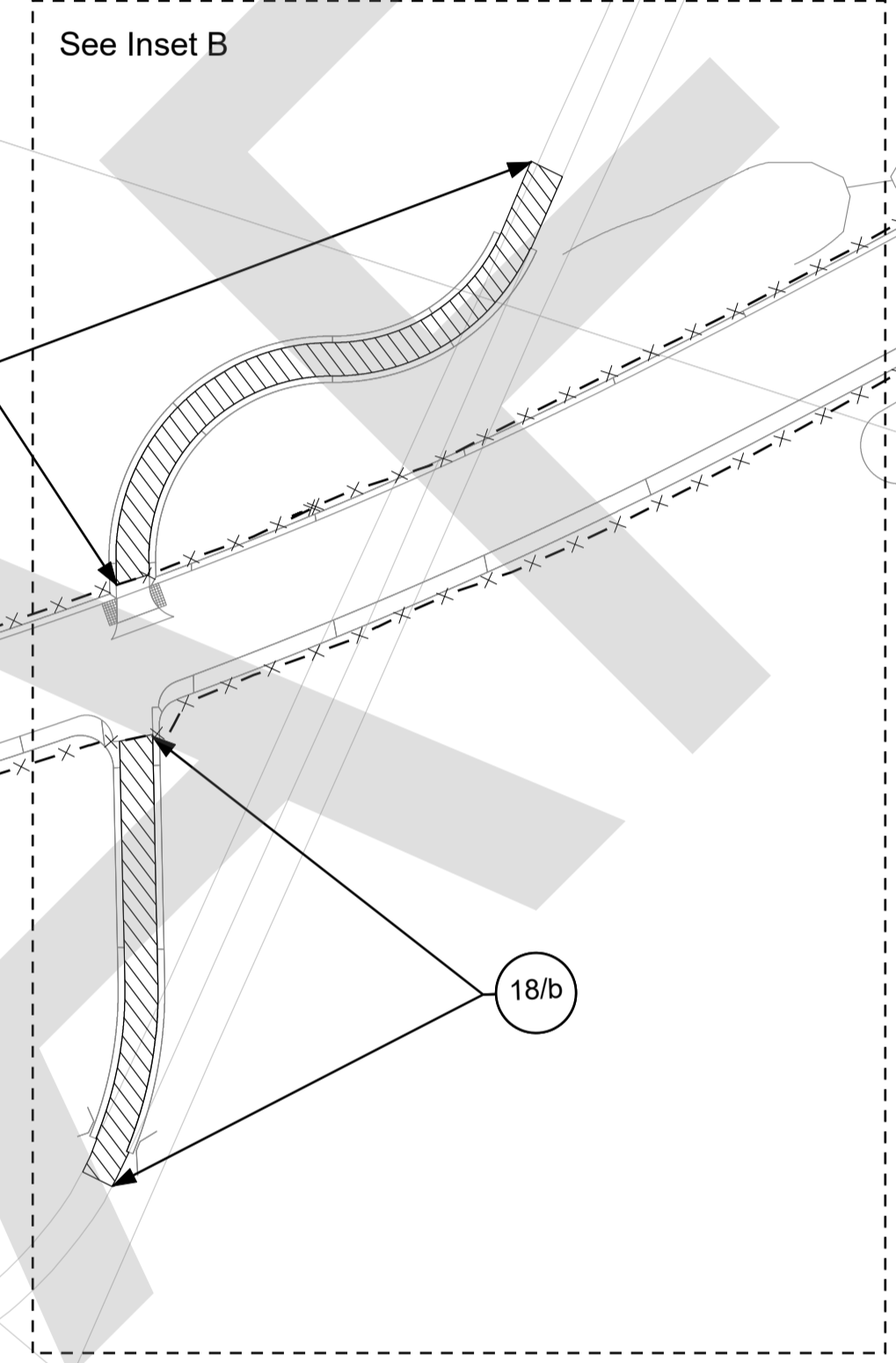
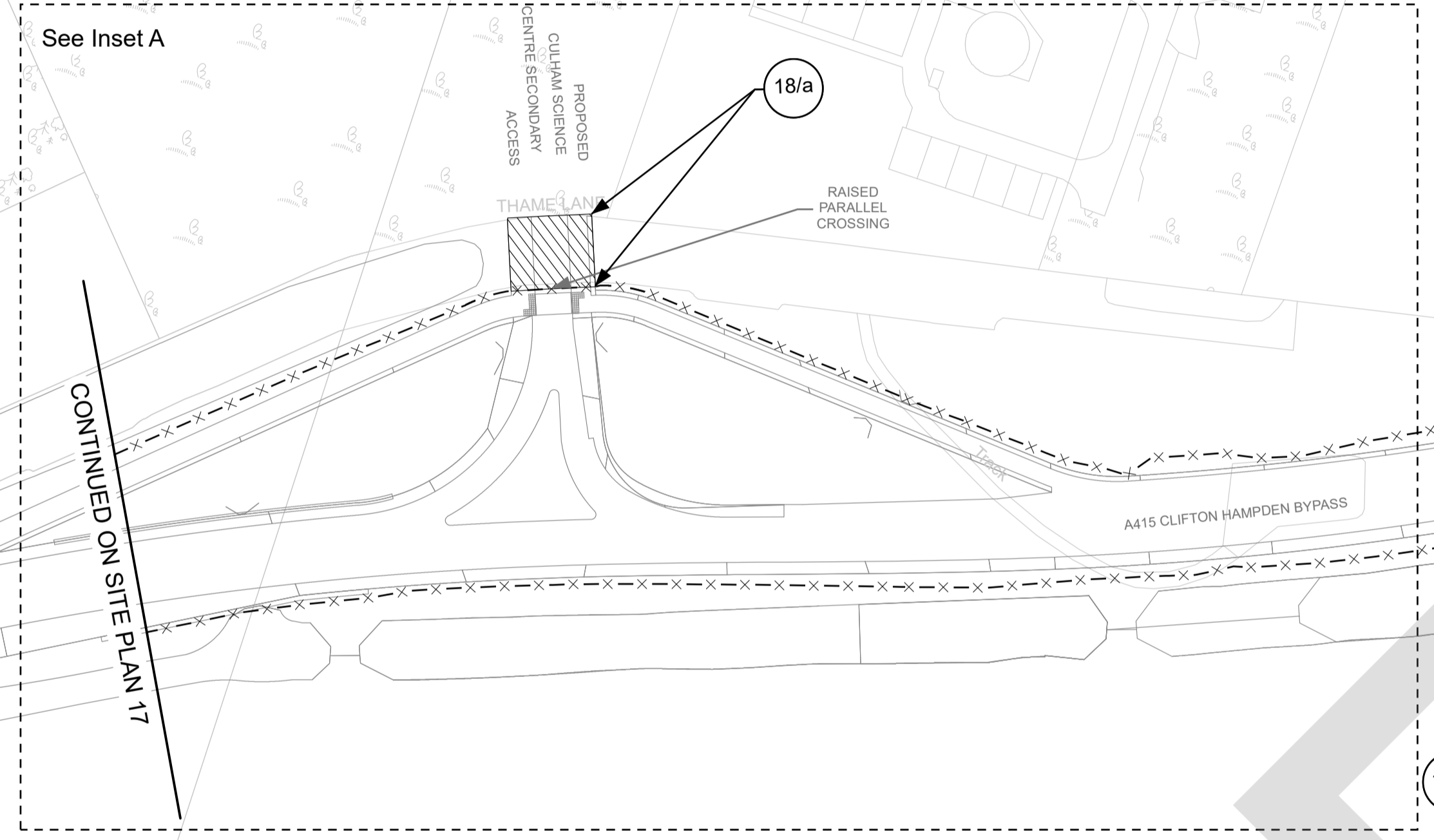
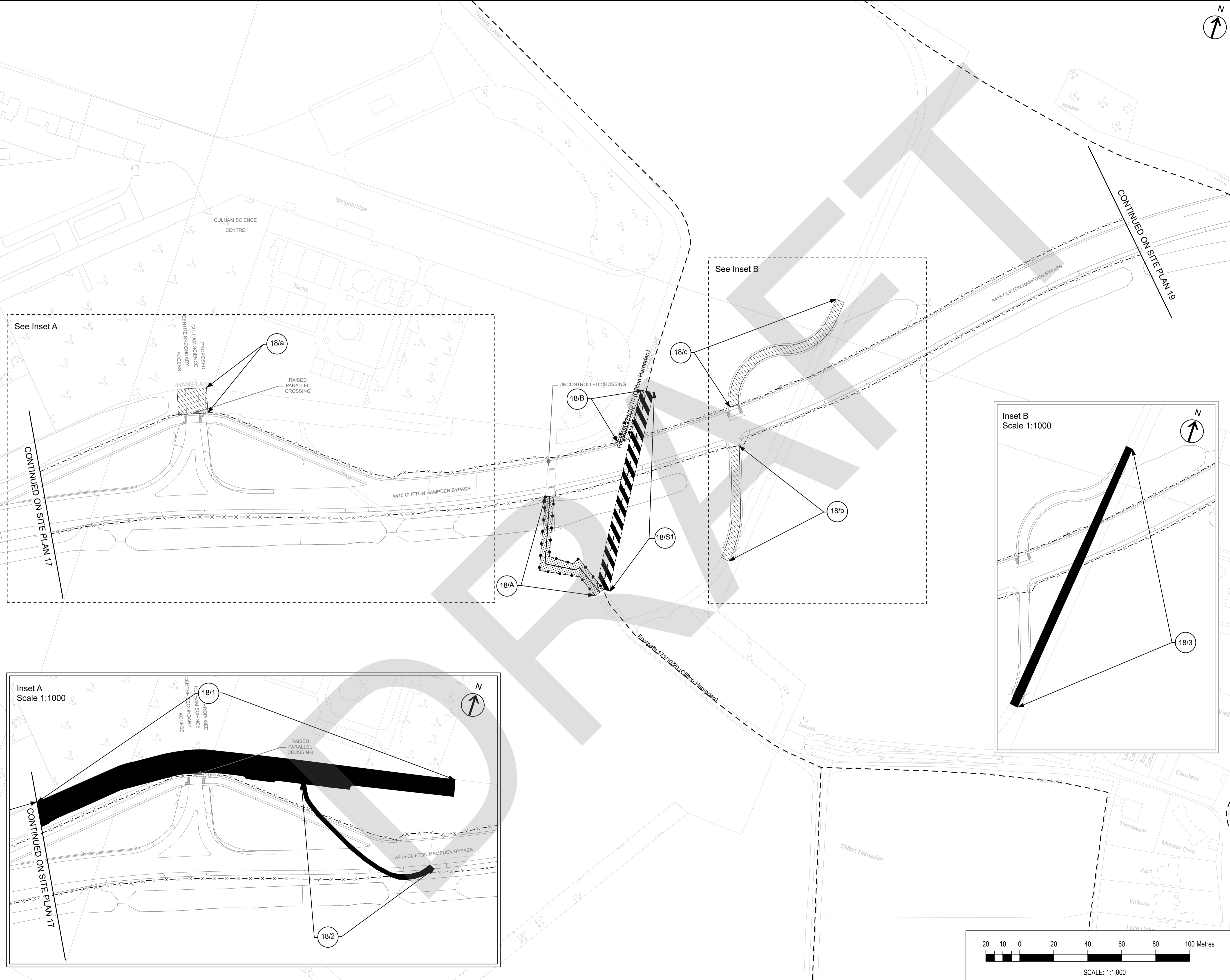


- NOTES:**
This Site Plan does not show widths or construction details
- Borough/Parish Boundary
 - Public Right of Way
- KEY:**
- Highway Boundary
 - Classified Roads
 - Highway to be stopped up
 - Highway to be improved
 - New Highway
 - Private Means of Access to be stopped up
 - New Means of Access



Rev	Description	dd/mm/yy	By	Check	Approved

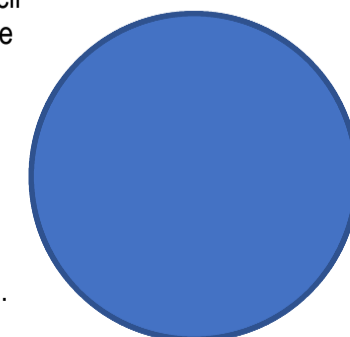
This map is reproduced from Ordnance Survey material with the permission of Ordnance Survey on behalf of the Controller of Her Majesty's Stationary Office. © Crown Copyright. Unauthorised reproduction infringes Crown Copyright and may lead to prosecution or civil proceedings. Oxfordshire County Council, 0100023343, 2021



THE OXFORDSHIRE COUNTY COUNCIL (DIDCOT GARDEN TOWN HIGHWAYS INFRASTRUCTURE – A4130 IMPROVEMENT (MILTON GATE TO COLLETT ROUNDABOUT), A4197 DIDCOT TO CULHAM LINK ROAD, AND A415 CLIFTON HAMPDEN BYPASS) (SIDE ROADS) ORDER 2022

SITE PLAN 18 -
A415 CLIFTON HAMPDEN BYPASS – CULHAM SCIENCE CENTRE AND NORTH OF CLIFTON HAMPDEN

The COMMON SEAL of Oxfordshire County Council was hereunto affixed in the presence of –



Authorised Officer
Dated this day of 2022 Seal No.

Drawn AH Checked ** Approved ** Date 06/07/22

GH Project Number 132861.001 Scale at A1 1:1,000

Drawing Number GH-132861001-SRO-18 Revision P01.4

